

p 2

心筋 SPECT 編 :

^{201}Tl myocardial SPECT, 180° scan, 360° scan

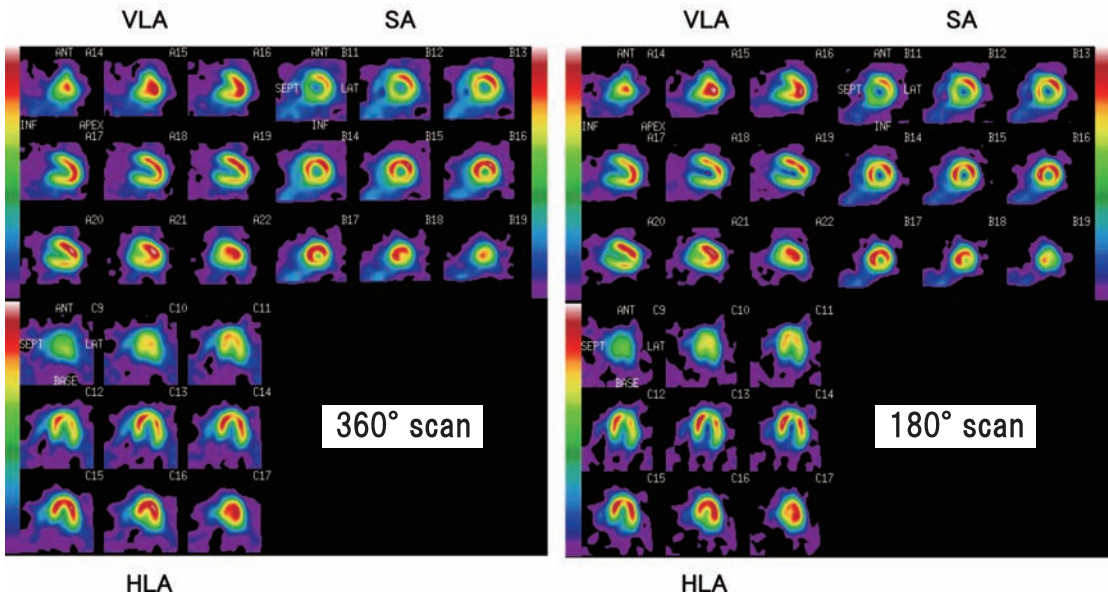


Figure 1 SPECT images of a normal volunteer acquired by 180° and 360° scan

p 3

心筋 SPECT 編 :

^{201}Tl myocardial SPECT stressed by adenosine

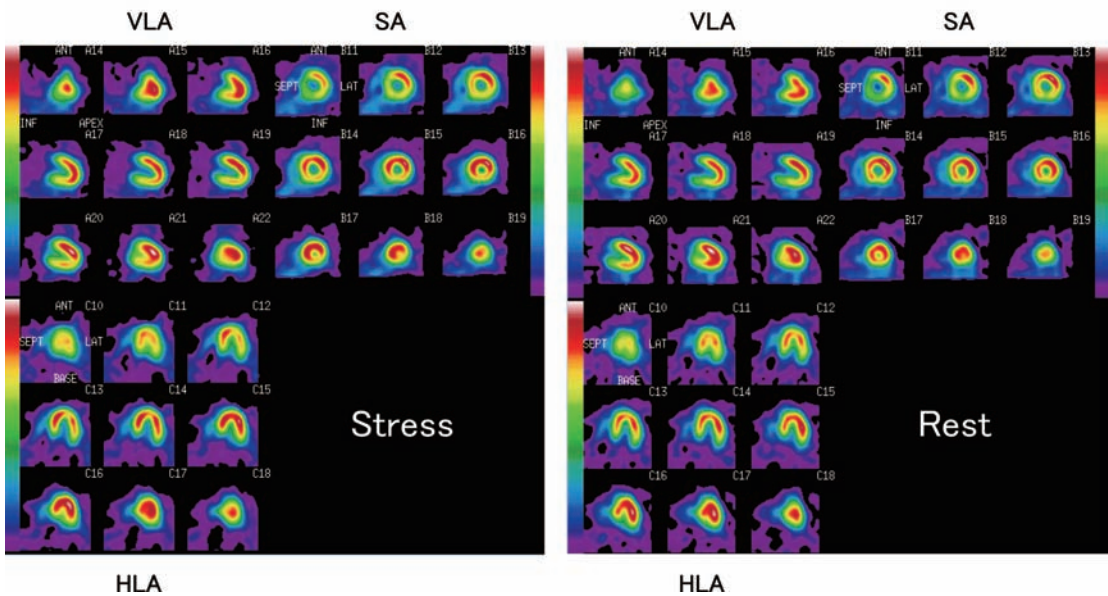


Figure 2 Standardized images acquired on triple-detector by 360° scan

p 3

心筋 SPECT 編 :

$^{201}\text{TlCl}$ myocardial SPECT stressed by adenosine

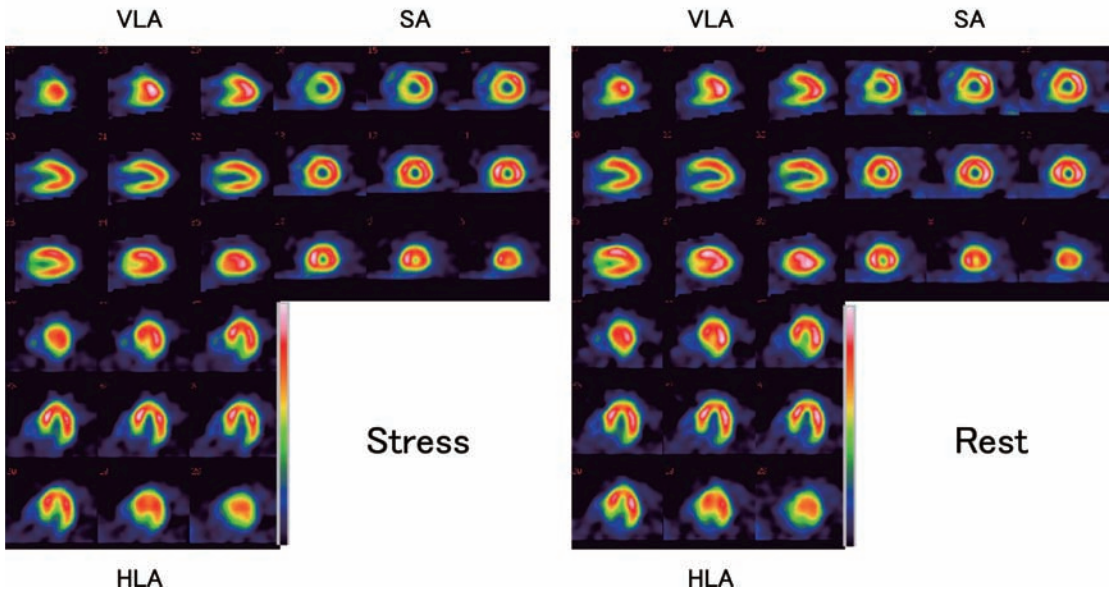


Figure 3 Standardized images acquired on L-shaped detectors by 180° scan

p 11

出力のポイント編 :

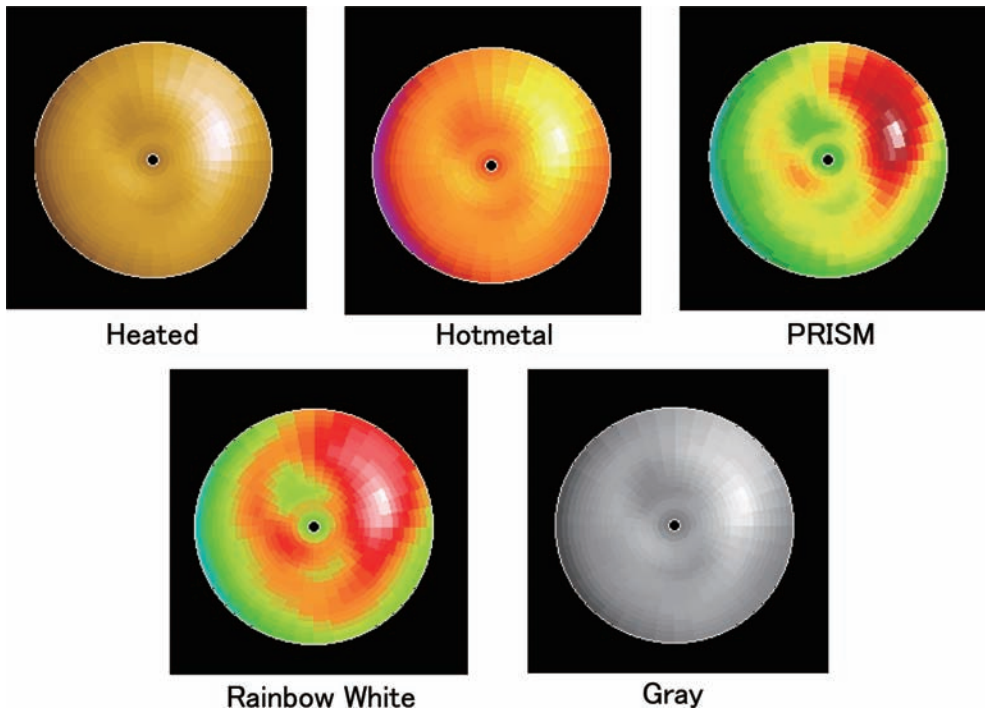


Figure 14 Comparison of myocardial polar map with regard to the color scale